

# ProGrass

*... the real alternative*

DIY Installation & Maintenance Instructions



*Do it yourself!*

Installing Prograss Synthetic Turf is easy if you follow these simple instructions

## Preparation

Prograss can be installed indoors or outdoors over any smooth, hard surface. All you need are the right tools and a little care. **Remember the appearance of the finished job depends almost entirely on your preparation of the base.**

Choose a dry day with moderate temperature conditions. The adhesive requires 8 hours to dry and will cure after 48 hours of dry weather. While preparing the base it is a good idea to have your Prograss rolled out in the sun somewhere clean and flat, this will 'relax' the grass fibres and make it more pliable and easier to handle.

## Trimming and Joining

First decide the most economical direction to lay your Prograss – across the area, or along the length. Position the pieces as they will be installed. Trim slightly oversize (about 100mm) from the backing side and roll out into position. If possible cut between the rows of stitching.

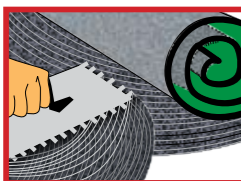
On joins, make sure the nap (pile direction) is running in the same direction so that the colour does not vary. To get a straight line for edges or joins, use a chalk line or white pen and straight edge. Check all measurements again before cutting. Place your trimmed pieces face up in their correct positions.

## Installation

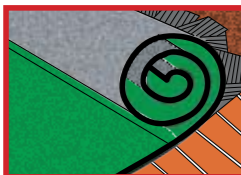
There are two methods of installation. (a) Total glue down, used on short pile products which have no infill and can be installed over concrete, timber etc. (b) Loose lay, which is used for longer pile products which have sand or rubber infill and can be installed over natural ground, crusher dust, pavers, concrete, asphalt etc.

## Glue Down Installation

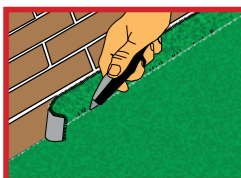
Make sure surface is absolutely dry, clean and dust-free. Remove any protrusions that could make a bump under the finished surface. Fill any depressions or cracks. Seal any raw timber surfaces.



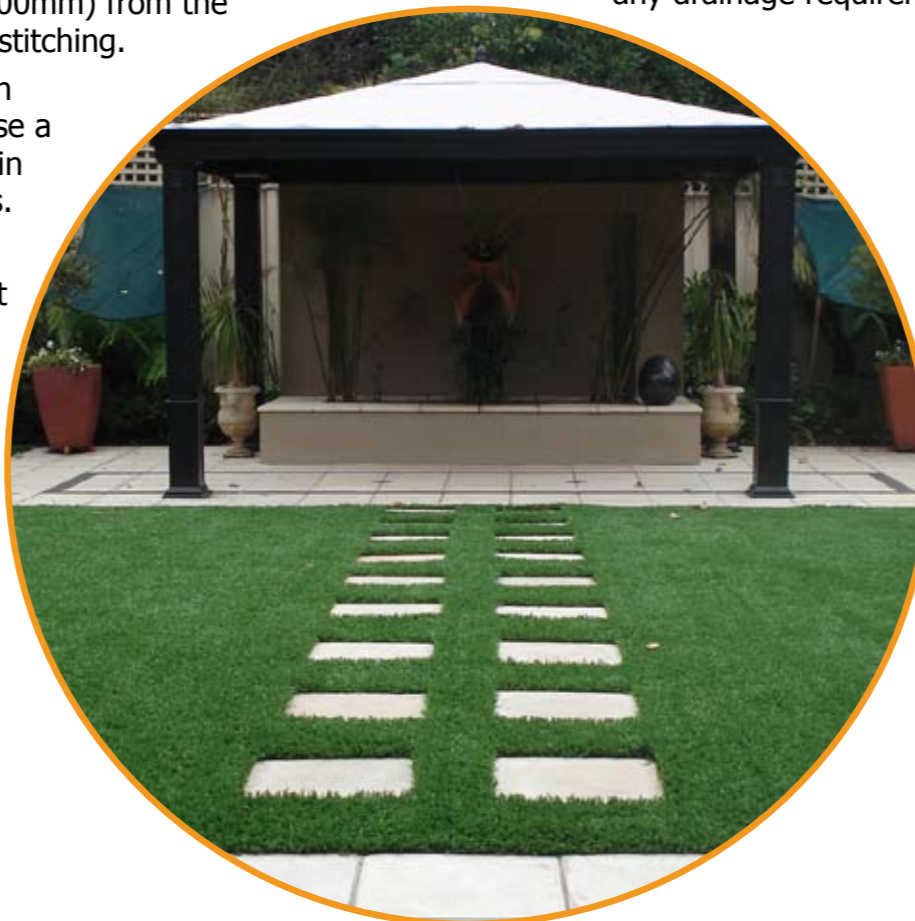
Step 1 - Having trimmed your Prograss, position pieces face up, as they will be installed. Mark a line on the base where a seam will appear, turn back the carpet, spread adhesive over an area about 600mm to 1000mm wide on either side of this line.



Step 2. – Lay one side of carpet on the adhesive up to the line, then lay the other side up to the line and butt the trimmed edges. Roll back the Prograss that has not been glued down and spread adhesive over the remaining surface, rolling the Prograss down as you go until all carpet has been adhered. Press the carpet firmly into the adhesive and work out any air bubbles with hand pressure or the back of a push broom or roller.



Step 3. – Trim off excess around perimeter. Should you require a neat finish around edges or across doorways, special plastic or metal strips are available from carpet stores.

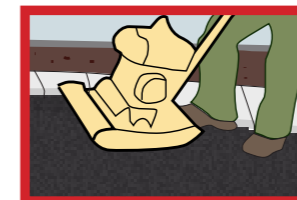


## Loose Lay Installation

If laying Prograss over pavers, concrete or asphalt make sure surface is clean with no protrusions.

Edging Treatment – Prograss can be secured at the perimeter by pins, metal/timber edging, abutting up to existing pathways or by tucking the grass into the ground and backfilling.

If laying Prograss over natural ground, prepare area by removing all vegetation. Dig out soil 50mm – 100mm below level of finished job. Identify any drainage requirements. Establish levels and falls using a string line and level.



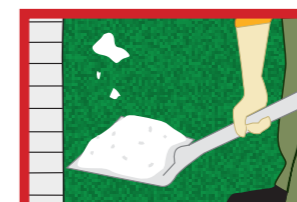
Step 1 - Lay approx. 50mm of crusher dust or paving sand. Screed the base off to the required level. Dampen base and compact by hand or with a vibrating plate compactor machine.



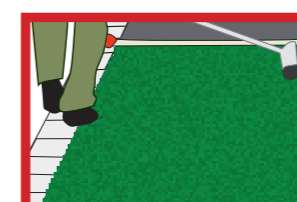
Step 2 - Having trimmed your Prograss (see Trimming & Joining) to approx. 100mm oversize, roll out into position and trim to size and shape.



Step 3 - To join, butt two pieces of Prograss together, fold back both pieces and lay joining tape. Use a notched trowel to spread adhesive onto joining tape. Carefully fold both pieces of Prograss together and press into adhesive, making sure no pile is tucked under.



Step 4 - Cover entire area of Prograss using a ballast layer of clean sand and/or granulated rubber allowing extra around the edges and in the corners.



Step 5 - Groom carefully into pile using a stiff bristle broom and making sure it falls to the base of the grass initially and that no pile is tucked under. Continue in layers to within 10mm to 20mm from the top, ensuring that the infill is evenly distributed, using the stiff bristled broom to remove creases or wrinkles as you go. Recheck the edges, trimming the Prograss as necessary and adjusting to have the Prograss level with edging.

100% DROUGHT PROOF

100% LEAD FREE



## Tools Required:

- Tape measure
- Stanley Knife
- Metal Straight Edge
- Chalk Line
- Notched Trowel
- Outdoor Grass Adhesive
- Joining Tape
- Stiff Bristle Broom
- Compactor Plate –natural base



## LOCAL DISTRIBUTOR

## HOW MUCH DO YOU NEED?

Prograss is 3.66m wide and is sold by the lineal metre. If the area you intend to cover is wider than 3.66mts, then you will need to join the grass. Remember, two or more rolls laid side by side **MUST** be laid in the same pile direction – and this will determine how much grass you need. This will generally be more than the m<sup>2</sup> of the area as there will be wastage. Draw a diagram of the area to be covered (to scale) and the quantity of grass can be easily calculated.

Assume you are covering an area of 7mts wide x 8mts long = 56m<sup>2</sup>

### Determining Prograss lin.mts.

Divide the total width of the area by 3.66 to give you the number of runs.

**Example: 7mts ÷ 3.66 = 1.9 runs (round up to 2 runs of 3.66mts).**

Take the length of your area and multiply the number of runs **Example: 8mts x 2 runs = 16 lin.mts. (x 3.66m = 58.56m<sup>2</sup>)**

### Determining Base Material

Take the total m<sup>2</sup> of the area to be prepared and multiply by depth of base material (in this instance 50mm = .05)

**Example: 56m<sup>2</sup> x .05 = 2.8cu.mts. of base material.**

### Determining Infill Material either sand or granulated rubber (based on 37-40mm pile height)

Granulated Rubber: One x 25kg. bag of rubber will cover 6m<sup>2</sup>. , therefore divide total square meterage by 6.

**Example: 56m<sup>2</sup> ÷ 6 = 9.3 round up to 10 bags of rubber (always allow a little bit more)**

Silica Sand (clean washed, rounded grade) 4kg of sand per m<sup>2</sup>,  
**Example: 56m<sup>2</sup> x 4 = 224kg of sand (or 12 x 20kg bags)**

## SIMPLE MAINTENANCE

Our Prograss products do not require routine lawn maintenance. To maintain its appearance you only need to give it a good stiff brush against the pile to make it spring back to life, or depending on whether you have pets, you may need to hose it down periodically.

A household cleaning detergent (bleach free) can be used, if needed, to remove pet wastes or stains. Simply spray the affected areas and hose down, being careful not to disturb the infill too much.

Leaves and debris can be removed by using a plastic lawn rake or power blower. Once again, be careful of the infill.

## REMEMBER:

**If you prefer, our expert installers are always on call to give you an obligation-free measure and installation quote.**

# ProGrass

## ProGrass

18 - 20 Donaldson Street  
PO Box 7207, Cairns QLD 4870  
Tel: 07 4041 7433 Fax: 07 4052 1005  
Email: info@prograss.com.au  
www.prograss.com.au